

Compact SAE GbE 1+1

Description

The **Compact SAE GbE** Optical adapter 1+1 belongs to the new generation of optical adapters Telnet Redes Inteligentes Compact SAE. This family of modules represents the most advanced range and best performance TELNET RI Optical Adapters.

Among the most important characteristics of the Compact SAE family highlights the implementation of advanced switching criteria and maintenance of statistics. Both features have been developed on programmable ASIC. This technology enables the Compact Optical SAE adapter to process and analyze traffic at line speed of service without penalty, reporting statistics to the operator.

Compact SAE GbE 1+1 has two optical interfaces, the client and the operator, both based on modular removable technology (SFP) and can be configured with SFP modules of different reaches depending on the application. Operator interface has two optical ports for redundancy applications available depending on the route (applications 1+1 and 1+0).

Once defined a default route, it is possible to establish the switching criteria -or set of them- that the Compact SAE GbE 1+1 Optical adapter take into account before placing traffic on the alternative route. The options available are as follows:

- LOS (Lost of signal). Loss of signal at the RX port of the optical transceiver.
- Optical power received at the RX port of the optical transceiver defined below.
- Errors per second. When it reaches the pre-configured threshold for one or more of the following errors: CRC, wrong size frame, fragments or reception of smaller frames than standard, and code symbols Disparity

The response time to such events will never be greater than 50 ms.

In addition, Compact SAE GbE 1+1 has the following policies of redundancy in case of fail of the main fiber: reversible switching (back to the main route in recovery), non-reversible (staying in the switched path to new switching event on the route) and forced commutation (always same path, independent of the events).



Features

1+1 Protection Network Interface.

Optical adapter with three SFP modular interfaces that allows the protection of the network route in Gigabit Ethernet routes.

Advanced switching criteria.

Based on LOS(Loss Of Signal), loss of power at the reception and CRC errors, wrong size, fragments or reception of smaller frames than standard, coding and disparity.

Traffic statistics and errors.

Compact SAE maintains statistical records of traffic received, transmitted and errors occurred.

Loops Support.

Allows the realization of loops in the user interface and network interfaces.

Digital Diagnostics.

Supports additional without diagnostic digital instrumentation. From the management console you can monitor the optical power of the circuit, the bias voltage and temperature.

Hot insertion and extraction.

This module is compatible with the chassis TriSAE and MetroSAE, supporting the insertion and extraction in hot.

General features

- 1+1 Protection Network Interface
- 3 SFP modular interfaces
- LC-PC connectorization.
- Dispatch Jumbo Frames (without MTU).
- FORCED and AUTO GbE mode.
- Advanced configurable switching criteria
- Policies of redundancy: reversible switching, non-reversible and forced commutation
- Response time never greater than 50 ms
- Traffic and errors statistics
- Allows the realization of loops in the client and operator interfaces
- Supports digital diagnostic without additional instrumentation
- Hot insertion and extraction
- Supported chassis: TriSAE and MetroSAE

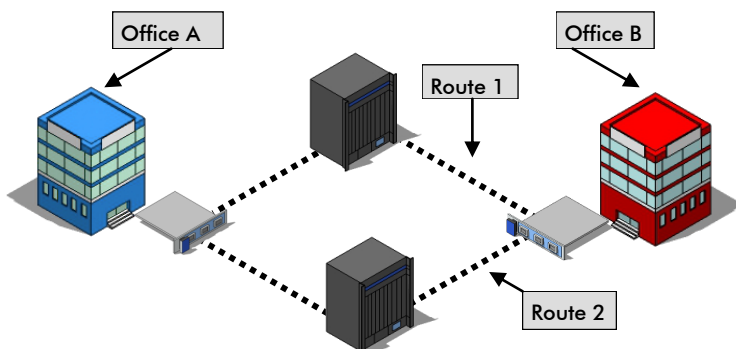


Applications

- Advanced protection of Gigabit Ethernet circuits.
- Demarcation point between the carrier's Gigabit Ethernet services network and customers.
- Integration of GbE services in networks CWDM and DWDM

Optical SFP modules options

	1000 BaseSX 550m	1000 BaseLX 10Km	1000 BaseLX+ 30Km	10GBASE-ER/EW 40Km	1000 BaseZX 80Km	xWDM and Singlefiber
Emitted power (Pout)	-9.5dBm	-7.3 dBm	-9 dBm	-0 dBm	-0 dBm	Consult available lambdas and dynamic ranges
Sensibility (S)	-18dBm	-9.9 dBm	-21 dBm	-23 dbm	-30dbm	
wavelength	850nm	1310 nm	1550 nm	1550 nm	1550nm	



Contact Information

Headquarters

Polígono Industrial Centrovía
c/ Buenos Aires, 18
50196 La Muela, Zaragoza
Spain

Tel.: (+34) 976 14 18 00
Fax: (+34) 976 14 18 10
comercial@telnet-ri.es

Commercial office in Madrid

Avda. Menéndez Pelayo, 85 - 1º A
28007 Madrid
Spain

Tel.: (+34) 91 434 39 92
Fax: (+34) 91 434 40 84

Subsidiary in Portugal

NETIBERTEL
Avenida da Liberdade, 110
1269- 046 Lisbon
Portugal