

# Optical Splitters

## Features

Devices that allow **splitting the optical signal** into **N Output branches** with minimal losses. The need for multiple signal distributing of the fundamental to makes of the new **FTTH PON networks**.

### Features

The possibility of using different architectures for sharing optical signals, allows the service provider to configure the network as effectively as possible.

With an input branch and **2, 4, 8, 16, 32 or 64** output branches, and insertion losses approximately equal in all output branches.

### Terminations

The optical fiber is optimized against curvatures according to recommendation **ITU-T G.657.A1**. Can be supplied with connectors according to the needs of the client and can be both convex angular polished and high return loss (FC / APC, SC / APC) and convex polishing (FC / PC, SC / PC).

The fibers of each branch can be presented as fiber 250 microns, with tight protection to 900 microns or 2mm single-fiber cable.

Possible also the supply as **pre-assembled module**.

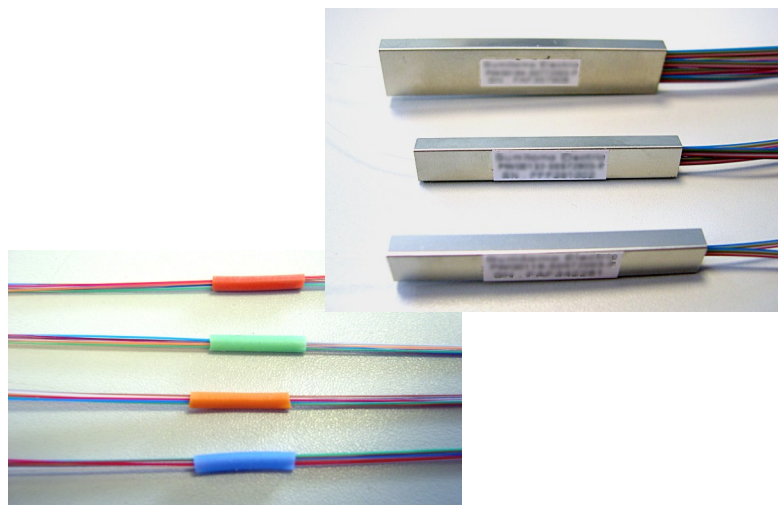
The usual mechanical presentation is over: splice trays, trays or cassettes for rack mechanics.

### Documentation



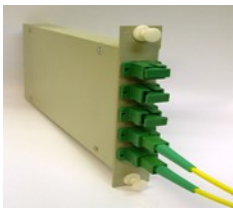

Each coupler/splitter is supplied characterized with measures of insertion loss (IL) and IL uniformity in 1310 and 1550 nm of each branch.

### Integrability

This solution can be perfectly integrated into a full deployment of FTTH network, along with other products provided by TELNET, such as: outside plant cables, optical splitters, splice boxes, drop microwires and indoor patch cords

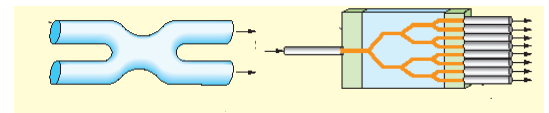
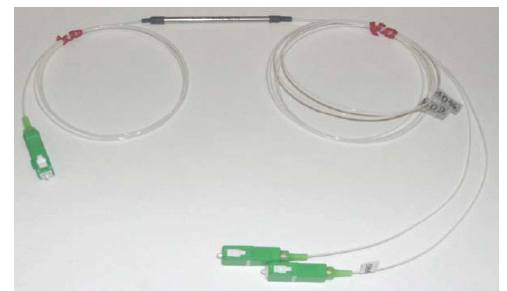
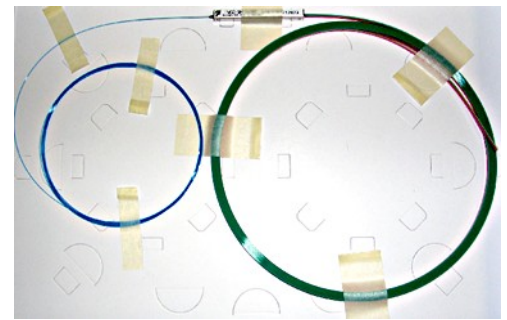


## Description

Presentation	Dimensions (mm)	Splitter Type	Termination	Details
Tray	Max 15x10. SE type	1x4, 1x8, 1x16, 1x32 y 1x64	Fiber 900 μm	
Tray /Rack	438 x 44 x 222 mm	1x4, 1x8, 1x16 y 1x32 (1 unidad de altura)	Adapters (FC/APC, SC/APC)	
	438 x 88 x 222 mm	1x64 (2 unidades de altura)		
Cassette	94x 23 x 195 Mm (in 3 height units)	1x2, 1x4: 1 slot	Cord 3 mm	
		1x8: 2 slots		
		1x16: 3 slots		
		1x32: 5 slots		
Connecto module SC/APC	115 x 75 x 8,5 mm	1x2	Cord 2 mm	
		1x4		
		1x16		
		1x32		
	115 x 75 x 15 mm	1x64		

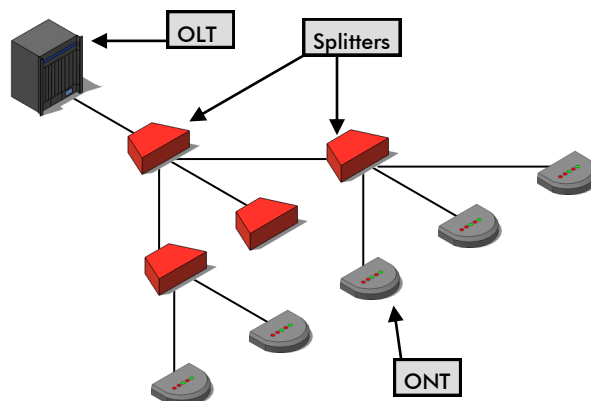
## Technical Specifications

Main features (individual element)						
Configuration of splitters	1 x 2	1 x 4	1 x 8	1 x 16	1 x 32	1 x 64
Wavelength	1260-1360 nm , 1450-1650 nm					
Technology	Fusion			PLC		
Insertion Loss (dB)	≤ 3,7	≤ 7,3	≤ 10,5	≤ 13,7	≤ 17,1	≤ 20,5
PDL (dB)	≤ 0,2	≤ 0,2	≤ 0,25	≤ 0,3	≤ 0,4	≤ 0,5
Uniformity	≤ 0,5	≤ 0,8	≤ 1,0	≤ 1,3	≤ 1,5	≤ 2,5
Return Loss (dB)	> 50			≥ 55		
Directivity(dB)	> 50			≥ 55		
Operating Temperature(°C)	- 20 / 70			- 40 / 85		
Input and output ports by default	Singlemode fiber Ø 250 µm low bending radius					
Minimum length of fibers(m)	≥ 2,5					
Output Ports	2 SM fibers	Ribbon 4 fibers x 1 (2,5 m individual fibers)	Ribbon 8 fibers x 1 (2,5 m individual fibers)	Ribbon 8 fibers x 2 (2,5 m individual fibers)	Ribbon 8 fibers x 4 (2,5 m individual fibers)	Ribbon 8 fibers x 8 (2,5 m individual fibers)
Body dimensions (mm)	Ø 3,2 x 54	4 x 4 x 38	4 x 4 x 40	7 x 4 x 46,9	7 x 4 x 46,9	12 x 4 x 58



Environmental Features (individual element)						
Splitter configuration	1 x 2	1 x 4	1 x 8	1 x 16	1 x 32	1 x 64
Operating Temperature	-20°/+70°C		-40°/+85°C			
Storage Temperature	-40°/+85°C					
Maximum moisture of operation and storage	93 %					

Color Code			
Color code output ports		Tube color code identifiers	
Port 1	Blue	Tube 1	Blue
Port 2	Orange	Tube 2	Orange
Port 3	Green	Tube 3	Green
Port 4	Brown	Tube 4	Brown
Port 5	Grey	Tube 5	Turquoise
Port 6	White	Tube 6	White
Port 7	Red	Tube 7	Red
Port 8	Black	Tube 8	Black



Structure of a Passive Optical Network (PON)

## Contact Information

### Headquarters

Polígono Industrial Centrovía  
c/ Buenos Aires, 18  
50196 La Muela, Zaragoza  
Spain

Tel.: (+34) 976 14 18 00

Fax: (+34) 976 14 18 10

comercial@telnet-ri.es

### Commercial office in Madrid

Avda. Menéndez Pelayo, 85 - 1º A  
28007 Madrid  
Spain

Tel.: (+34) 91 434 39 92

Fax: (+34) 91 434 40 84

### Subsidiary in Portugal

NETIBERTEL  
Avenida da Liberdade, 110  
1269- 046 Lisbon  
Portugal