

Ground Shoe Compact mast MUM45

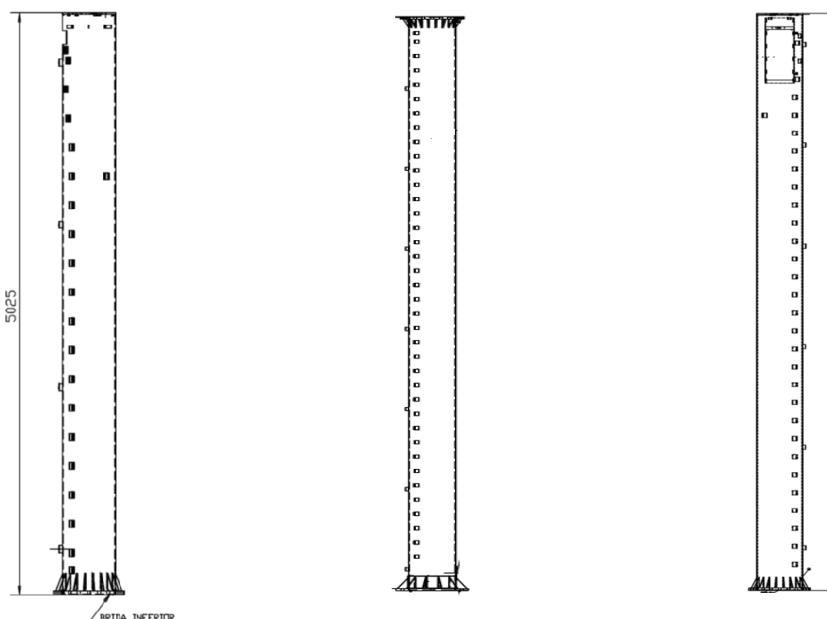
- Low visual impact
- Diameter = 450mm
- Modular design
- Heights up from 6 to 18m

Main characteristics

| | |
|---|---|
| Minimum visual impact | It is possible to minimize the visual impact integrating the antenna and mast diameter |
| Accessibility | Easy access to the connectors, azimuth and tilt area. Quick release doors and existence of removable "pates" around the junction of the last section to provide access to all three sectors. And both module doors are prepared for installation of TMAs. |
| Double azimuth | All of our antennas have global azimuth between -50° and $+50^\circ$, and independent azimuth per sector that could be varied because of the type of installed antenna. |
| Multisector configuration | One-sector, bisector 120° , bisector 180° . |
| Variable Electrical Tilt, with RET (Remote Electrical Tilt) | Antennas are prepared to be installed with external or internal RET |
| Security System | GAME SYSTEM (vertical lifeline safety system) included in all of the sites where necessary |

Configuration types

| | |
|-------------|--|
| 1 stretch | Designed for less than 12 m solutions |
| 2 stretches | Two sections designed for greater than 12m solutions |



Antenna access types

| | |
|----------------------|---|
| With a crane |  |
| With removable steps |  |
| With fixed steps |  |

Different diameter transitions

| | |
|-------------------------|--|
| 635mm diameter antennas |  |
| 450mm diameter antennas |  |

Parameters

| | |
|--------------------------------------|----------------------------|
| Maximum deviation allowed under 1,5° | Wind speed 165 Km/h |
| Max. wind speed | 200Km/h |
| Mast leveling | Capacity leveling up to 3° |
| NBAE | < 150Kg/m2 |

Advantages

| |
|--|
| Lower visual impact on urban sites. |
| Cables, RET and TMA located on the mast. |
| Modularity: Heights depending on the sites |
| Valid for 450 or 635 Telnet antennas |
| Low cost of installation and maintenance. |
| Safety system included in the mast. |

Types of installation to small concrete basement:



TMAS housing options:

