

## TETRABAND 4x 1710-2690 MHz

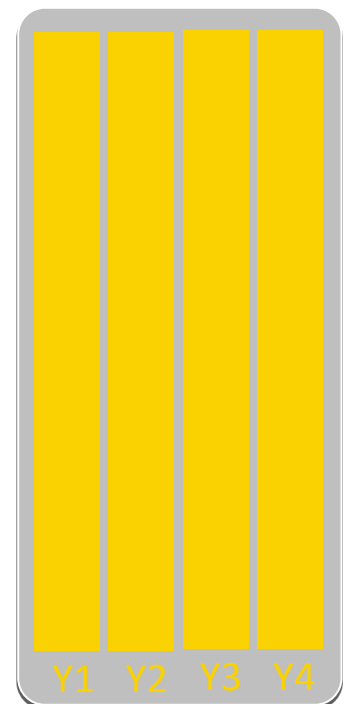
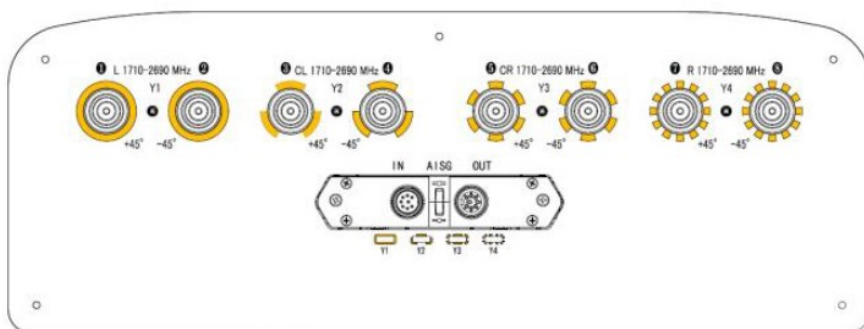
- Panel Antenna
- Internal RET

### RF Electrical specifications\*

Frequency Range (MHz)		1710-1880	1920-2170	2500-2690
Cluster Name		Y1 // Y2 // Y3 // Y4		
Gain (dBi)	Mid tilt	16,5	17,4	17,6
	Over all Tilts:			
	Average	16,3	17,2	17,3
Azimuth Beamwidth (deg)	Tolerance	0,8	0,8	0,9
	Average	70	64	59
Elevation Beamwidth (deg)	Tolerance	5	5	7
	Average	7,4	6,7	5,5
Cross Polar Discrimination at Boresight (dB)	Tolerance	0,5	0,7	0,5
			>18	
First Upper Sidelobe level		>15	>15	>14
Front to Back Ratio total power $\pm 30^\circ$ (dB)		>24	>24	>25
Interband isolation (dB)			>25	
Polarization (deg)			$\pm 45$	
Electrical Downtilt (deg)			2-12	
Impedance ( $\Omega$ )			50	
VSWR			< 1.5:1	
PIM, 2x43dB (dB)			< -150	
Max. Effective Power per Port (W)			250	

\* All specifications are subject to change without notice. Refer to TELNET for the most current information.

\* All specifications are based on NGMN recommendations on Base Station Antenna Standards (BASTA).



## Mechanical specifications

Antenna Dimensions: Height/Width/Depth (mm)	1410 x 480 x 175
Packing Size: Height/Width/Depth (mm)	1620 x 560 x 275
Net Weight (kg)	22
Shipping Weight (kg)	29
Connector Quantity	8
Connector Type	4.3-10 female connectors
Connector Position	Bottom
Wind Load Frontal (N @ 150 KMH)	891
Wind Load Lateral (N @ 150 KMH)	291
Wind Load Rear (N @ 150 KMH)	1003
Survival wind speed (km/h)	200
Azimuth (Full antenna / Per Sector)	N/A
Radome Material	Fiber glass
Radome Colour	White
Lightning Protection	DC grounded

## TELNET RET

RET Type	Internal
Actuator standalone size: Height / Width / Depth (mm)	Inside the antenna
Actuator installed size: Height / Width / Depth (mm)	Inside the antenna
Power consumption (W)	1 – 10
Loss of position on power failure	False
Compatible standards	3GPP/AISG 2.0
Replaceability in field	Yes, without removing antenna.
Visual indicator available on tilt change	True
Daisy chain available	True



## Contact Information

### TELNET Redes Inteligentes Headquarters

Polígono Industrial Centrovía  
c/ Buenos Aires, 18  
50198 La Muela, Zaragoza  
España  
Teléfono: (+34) 976 14 18 00  
Fax: (+34) 976 14 18 10  
[telnet@telnet-ri.es](mailto:telnet@telnet-ri.es)

### Commercial office in Madrid

Avda. Menéndez Pelayo, 85 - 1º A  
28007 Madrid  
España  
Teléfono: (+34) 91 434 39 92  
Fax: (+34) 91 434 40 84

### Subsidiary in Portugal

NETIBERTEL  
Av. Fontes Pereira de Melo, 35 – 14ºD  
1050-118 Lisboa  
Portugal  
[comercial.pt@telnet-ri.es](mailto:comercial.pt@telnet-ri.es)

[www.telnet-ri.es](http://www.telnet-ri.es)