

## TETRABAND 4x 1695-2690 MHz

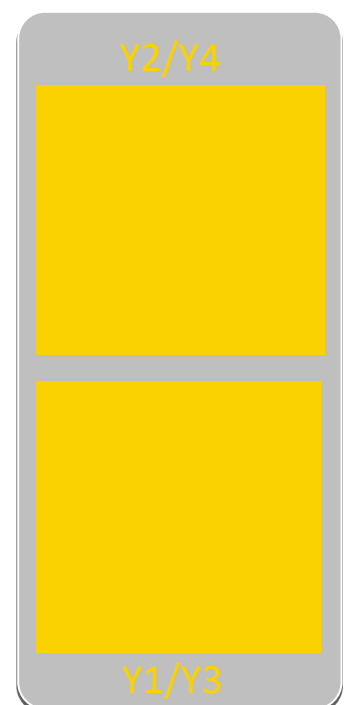
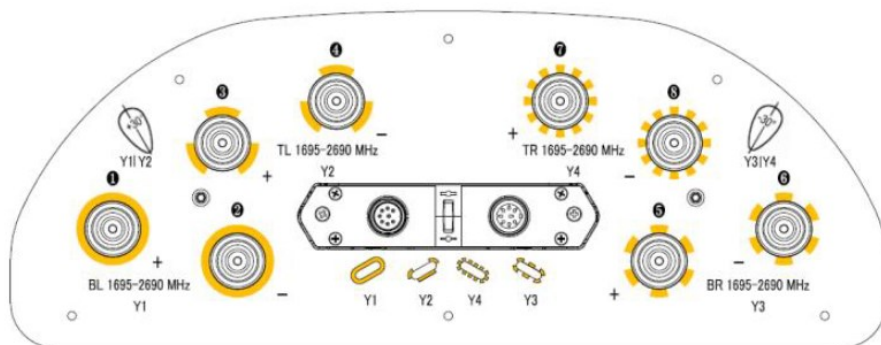
- Panel Antenna
- Internal RET
- HBW = 33°

### RF Electrical specifications\*

Frequency Range (MHz)	1695-1880 1920-2170 2300-2690						
	Y1 // Y3			Y2 // Y4			
Cluster Name							
Gain (dBi)	Mid tilt	18,1	18,8	19,0	17,4	18,1	18,2
	Over all Tilts:						
	Average	18,0	18,7	18,9	17,3	18,0	18,1
	Tolerance	0,6	0,7	0,8	0,8	0,8	0,9
Azimuth Beamwidth (deg)	Average	43	37	32	43	37	32
	Tolerance	5	4	4	5	4	4
Elevation Beamwidth (deg)	Average	8,8	7,8	6,6	8,9	7,9	6,7
	Tolerance	0,8	0,6	0,6	0,8	0,6	0,6
Beam Canters, horizontal (deg)	+30			-30			
First Upper Sidelobe level	>13	>14	>15	>14	>14	>16	
Front to Back Ratio total power ±30° (dB)	>25	>21	>19	>25	>21	>19	
Cross Polar Discrimination at Boresight (dB)	>18	>10	>5	>18	>11	>7	
Interband isolation (dB)	>28			>28			
Polarization (deg)	±45			±45			
Electrical Downtilt (deg)	2-12			2-12			
Impedance (Ω)	50			50			
VSWR	< 1.5:1			< 1.5:1			
PIM, 2x43dB (dB)	< -150			< -150			
Max. Effective Power per Port (W)	250			250			

\* All specifications are subject to change without notice. Refer to TELNET for the most current information.

\* All specifications are based on NGMN recommendations on Base Station Antenna Standards (BASTA).

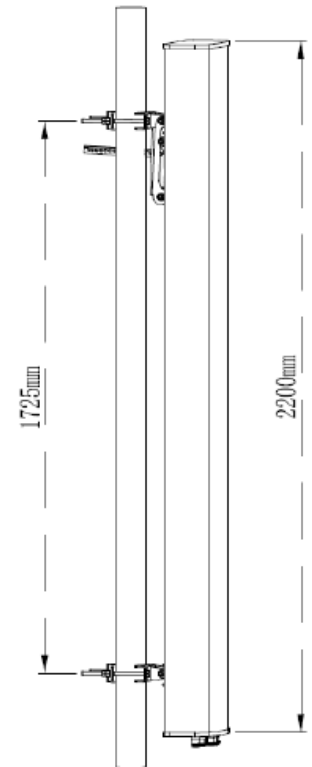


## Mechanical specifications

Antenna Dimensions: Height/Width/Depth (mm)	2200 x 400 x 150
Packing Size: Height/Width/Depth (mm)	2415 x 490 x 255
Net Weight (kg)	29
Shipping Weight (kg)	41
Connector Quantity	8
Connector Type	4.3-10 female connectors
Connector Position	Bottom
Wind Load Frontal (N @ 150 KMH)	1207
Wind Load Lateral (N @ 150 KMH)	1271
Wind Load Rear (N @ 150 KMH)	477
Survival wind speed (km/h)	200
Azimuth (Full antenna / Per Sector)	N/A
Radome Material	Fiber glass
Radome Colour	Light grey
Lightning Protection	DC grounded

## TELNET RET

RET Type	Internal
Actuator standalone size: Height / Width / Depth (mm)	Inside the antenna
Actuator installed size: Height / Width / Depth (mm)	Inside the antenna
Power consumption (W)	1 – 10
Loss of position on power failure	False
Compatible standards	3GPP/AISG 2.0
Replaceability in field	Yes, without removing antenna.
Visual indicator available on tilt change	True
Daisy chain available	True



## Contact Information

### TELNET Redes Inteligentes Headquarters

Polígono Industrial Centrovía  
c/ Buenos Aires, 18  
50198 La Muela, Zaragoza  
España  
Teléfono: (+34) 976 14 18 00  
Fax: (+34) 976 14 18 10  
[telnet@telnet-ri.es](mailto:telnet@telnet-ri.es)

### Commercial office in Madrid

Avda. Menéndez Pelayo, 85 - 1º A  
28007 Madrid  
España  
Teléfono: (+34) 91 434 39 92  
Fax: (+34) 91 434 40 84

### Subsidiary in Portugal

NETIBERTEL  
Av. Fontes Pereira de Melo, 35 – 14ºD  
1050-118 Lisboa  
Portugal  
[comercial.pt@telnet-ri.es](mailto:comercial.pt@telnet-ri.es)

[www.telnet-ri.es](http://www.telnet-ri.es)